

BRENTWOOD PARK ELEMENTARY
SEISMIC UPGRADE AND EXPANSION PROJECT

FEBRUARY 2026 UPDATE

RECENTLY COMPLETED WORK

- North addition parapet framing
- North addition level 1 wall rough-in complete and passed inspection
- Gym roof watertight

WORK IN PROGRESS

- North addition exterior and interior steel stud framing
- North addition roofing cap sheet installs
- North addition window frame and glazing
- North addition level 1 backing and blocking
- Gym welding connections and exterior wall framing
- Gym to north addition sanitary and storm line

SCHEDULE

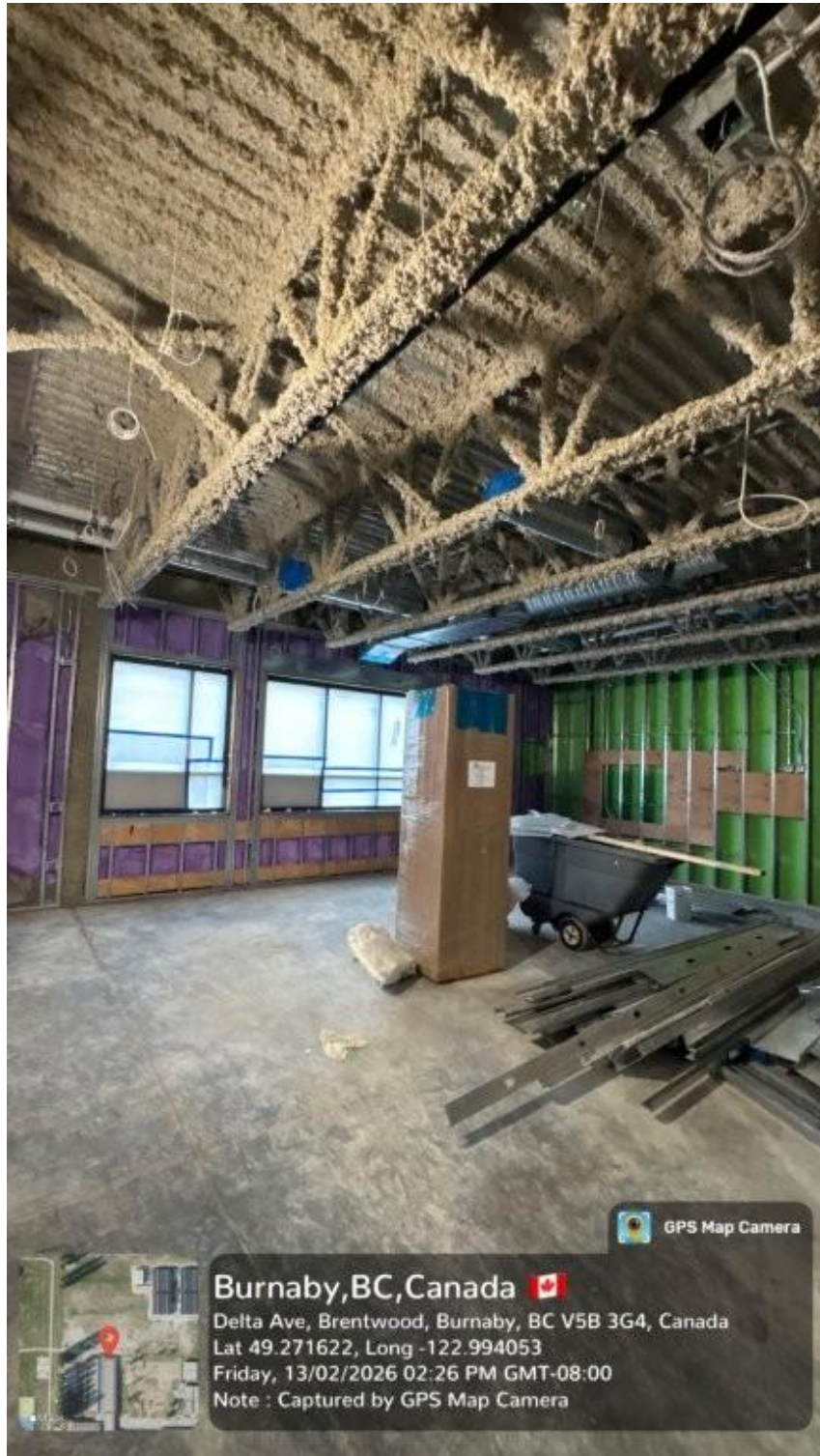
- Phase 1 (classroom & gym addition) – forecast completion **July 2026**
- Phase 2 (Seismic upgrade, interior renos, child care addition) – forecast completion **August 2027**

SITE SAFETY

- Extra crossing guard at kiss-n-go to support flow of traffic and safe crossings.
- No reportable safety incidents this month from Unitech.



New Classroom Addition – SW Exterior



North Addition – Interior Level 1 Classroom



New Gym – West Interior Wall